



COMPANY PROFILE

2024-2025



**IT'S TIME TO MAKE
SMART CHOICES...**

www.alfagroup-is.com



COMPANY PROFILE

TABLE OF CONTENT

ABOUT US	01-02
Mission & Vision	03
STRATEGY & CORE VALUES	04
PHYSICAL SECURITY AI BASED SOLUTIONS	05-16
- SMART SURVEILLANCE SYSTEM	06
- SMART FLEET MANAGEMENT	07
- AI PPE DETECTION	09
- ACCESS CONTROL	13
- PARKING NAVIGATOR SYSTEMS	15
AUDIO VISUAL SMART SOLUTION	17-18
TV AND SATELLITE	19-22
- SATELLITE OVER FIBER	20
- DIGITAL SIGNAGE	21
- SATELLITE MASTER ANTENNA	22
INFRASTRUCTURE AND DATA CENTER	23-25
- ACTIVE DATA EQUIPMENT & NETWORK INFRASTRUCTURE	23
- DATA CENTER	24
- PASSIVE DATA EQUIPMENT & NETWORK INFRASTRUCTURE	25
SMART LIGHTING AND ENERGY SOLUTION	26-28
- SUSTAINABLE ENERGY SOLUTIONS	27
- SMART EV CHARGING SYSTEMS	28
HOME AUTOMATION	29-32
THE MITA CONCEPT	33-38
WHOM WE SERVE	39
OUR CLIENTS AND PARTNERS	40




ABOUT US

Alfa Group Integrated Systems (AGIS), is an Egyptian Limited Liability Company based in Cairo with branch offices in USA and Kuwait. AGIS is at the forefront of delivering ICT Solutions and services varying from IT infrastructure to AI smart tailored Solutions, with strategic plans for expansion into North Africa and the Gulf region.

Our leadership team, offering over 150 years of combined experience, specialized in various engineering domains, with collaborative experience includes engagements with multinational corporations within diverse industries.

In the realm of real estate, we are dedicated to pioneering smart solutions, ranging from AI-driven security to innovative IT infrastructure, audio-visual technologies, and entertainment systems by integrating these solutions, we are not only reducing project infrastructure costs but also generating new income streams and added value to the project.

Our commitment extends to transforming gated communities, business complexes, educational institutions, and shopping malls to a smart unique and attractive experience to end users through the integration of advanced smart technologies and AI.



AGIS offers innovative AI-based solutions to the oil and gas sector, covering safety compliance, AI systems, and smart fleet management systems with deep AI learning and real time analysis. These solutions aim taking safety performance to a new high level with optimized resources

MISSION



To provide intelligently tailored solutions that enhance the value of a diverse range of businesses. We strive for excellence through meticulous planning and top-notch implementations tailored to meet varied needs.

VISION



To become the trusted and preferred provider of light current services, renowned for our reliability, cost-effective solutions, and integrated network design capabilities.

STRATEGY

Sustain development, diversify services and expand geographically.

CORE VALUES



Commitment



Knowledge



Transparency



Accountability



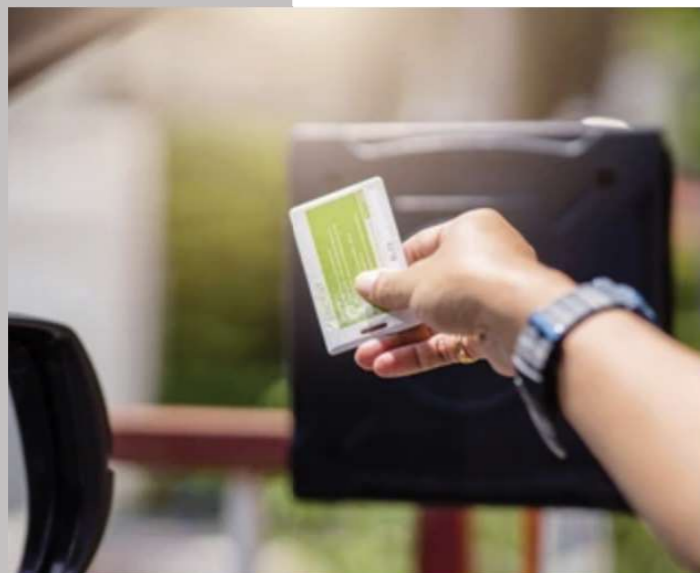
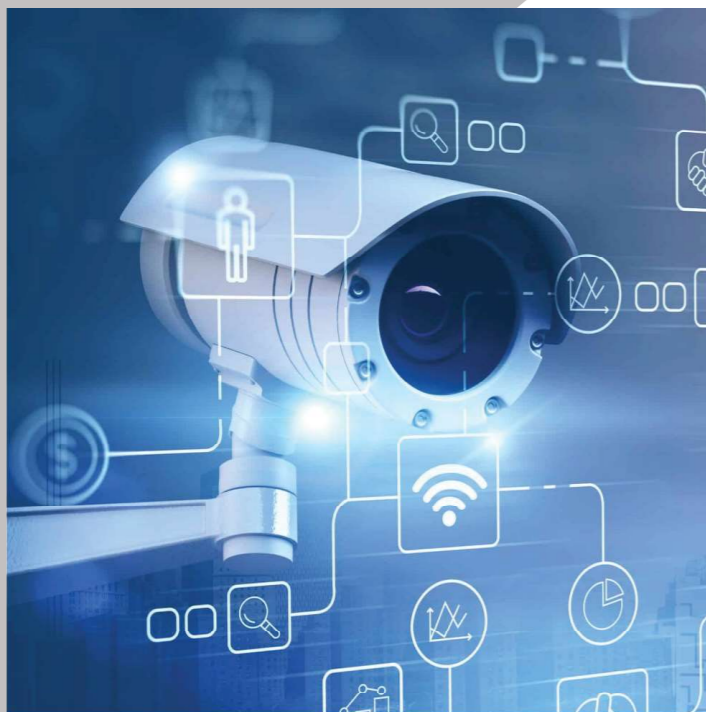
Communication



Teamwork

PRODUCTS & SERVICES

PHYSICAL SECURITY AI BASED SOLUTIONS



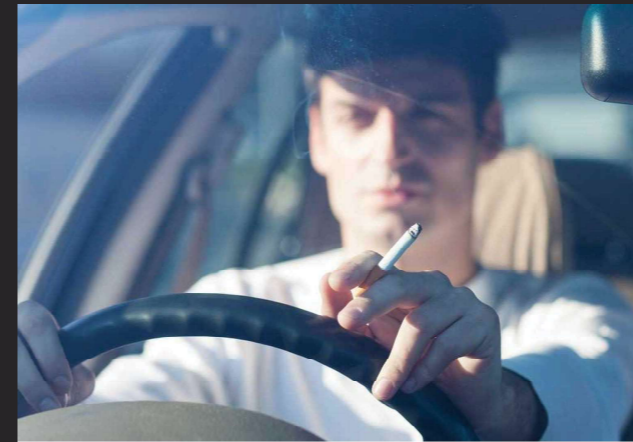
SMART SURVEILLANCE SYSTEM

Smart VMS & AI based analytic solution
(ANPR, Hazardous Areas Security Solutions)

Our state-of-the-art video surveillance systems are revolutionizing security, with high-resolution cameras equipped with advanced features such as Audio Detection, People Counting, and License Plate Recognition (ANPR), our systems provide comprehensive coverage. Leveraging AI-driven analytics, we ensure complete situational awareness by detecting suspicious behavior, tracking individuals and integrating seamlessly with access controls for PPE wear detection at corporate levels and speed monitoring.

Our parking barrier gates series incorporates License Plate Recognition (LPR), RFID Card, and Barcode Ticket Parking, offering versatile solutions. The RFID card and barcode parking system minimizes operating costs, provides ample storage for temporary paper tickets, and offers clear visibility of vehicle entry times and plate numbers.

SMART FLEET MANAGEMENT



Presenting an advanced AI-based fleet management system, our solution surpasses traditional safety measures. It encompasses features such as detecting harsh braking and accelerations, immobilizing vehicles in potential robbery scenarios, and monitoring driver behavior for signs of fatigue, cell phone use, and distractions. Additionally, the system ensures safe driving distances, monitors seat belt compliance, includes blind spot monitoring, and generates comprehensive performance evaluation reports.

● Driver Face Recognition

- Utilize facial recognition technology to prevent unauthorized driver substitutions.
- Seamless integration with driver attendance systems, and safety performance detection cameras.

● Route Management

- Actively monitor routes on E-maps with electronic fencing for designated zones (Departure, Arrival, Driving, Traffic Restriction, Speed Limit).
- Implement speed limitations and warnings for enhanced safety.
- Detecting surrounding vehicles pedestrian, lane deviation, traffic signs, speed and predicts potential danger.

● Keep Interaction

- Establish connectivity with the management center via 3G/4G/WiFi/GPS.
- Access live video feeds and receive active alarms.

AI PPE DETECTION

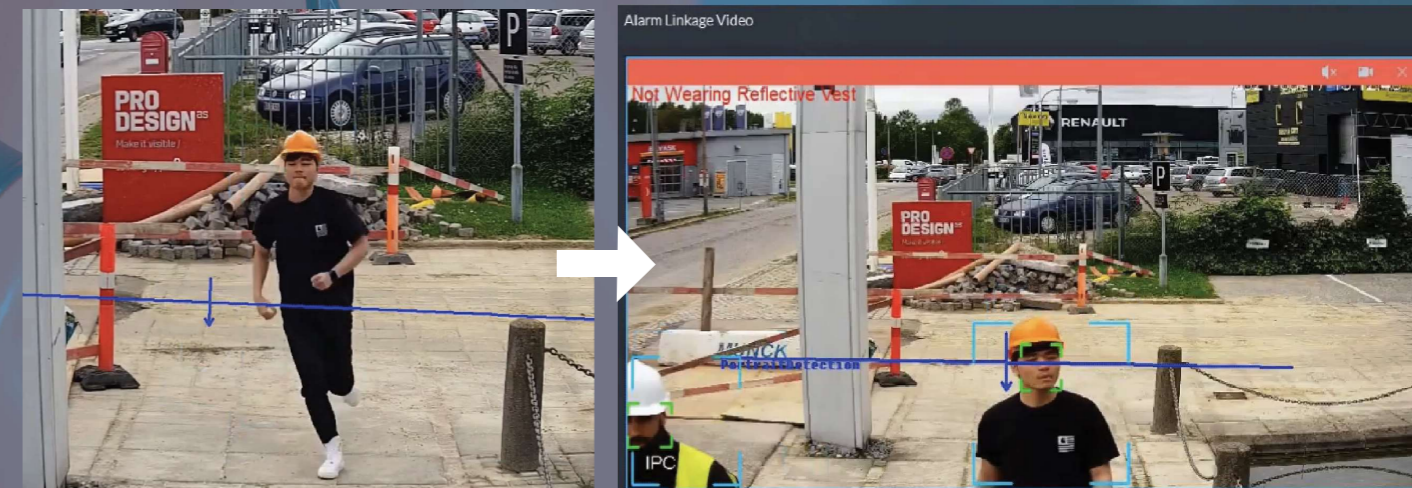
Using AI Deep Learning Algorithm, Our Technology offers cutting-edge solutions applicable to various industries wherever Safety compliance is a must with accurate AI detection algorithm our solutions can detect the usage of proper personal protective equipment for specific areas as per applied regulations.

With up to 9 attributes the system can detect **Hard hats, glove, mask, safety shoe, vests** and more.

The system ensures the compliance with safety regulations and procedures with no reliance on safety team supervision or hazard observation cards action.

By Proactive real time action, the systems helps to prevent an incident and takes action in real time through triggering configurable alarms at the time of incident, while enabling quick target allocation using AI custom learning.

The PPE Detection algorithm also provides statistical safety performance reports for each individual that might be further integrated with other system reports such as driving safety compliance.





ACCESS CONTROL

Tailored for gated communities, business complexes, mall parking, and visitor management, our Access Control solutions seamlessly integrate with security system records. These versatile offerings include access control systems designed to meet diverse needs, offering both ticket-based solutions (barcode, MI fare card, token) and ticketless options through LPR technology.

Bio Guard Access:

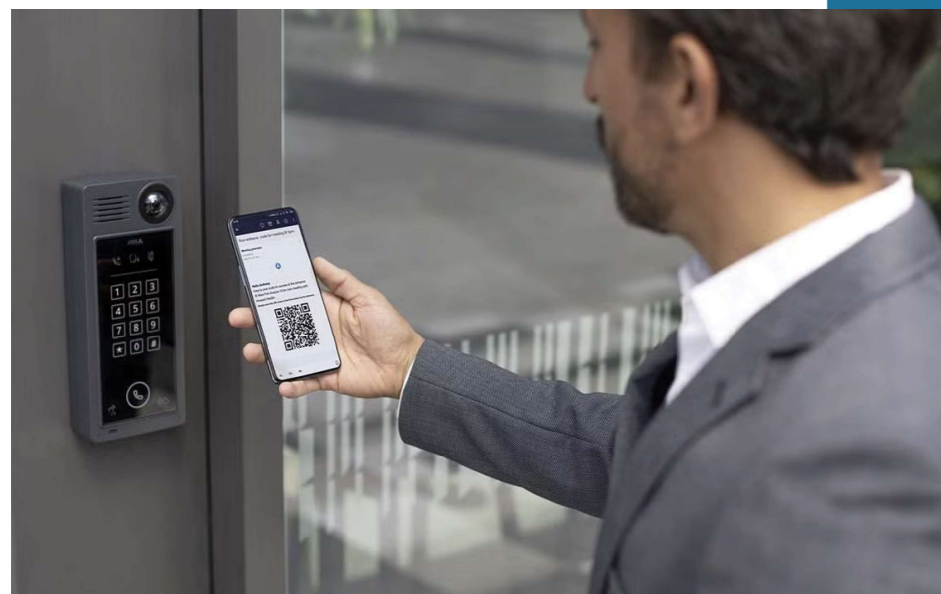
Discover our diverse range of biometric access control options, ranging from fingerprint access and eye scanners to touch-free face recognition, offering convenient access control solutions and time attendance tracking.

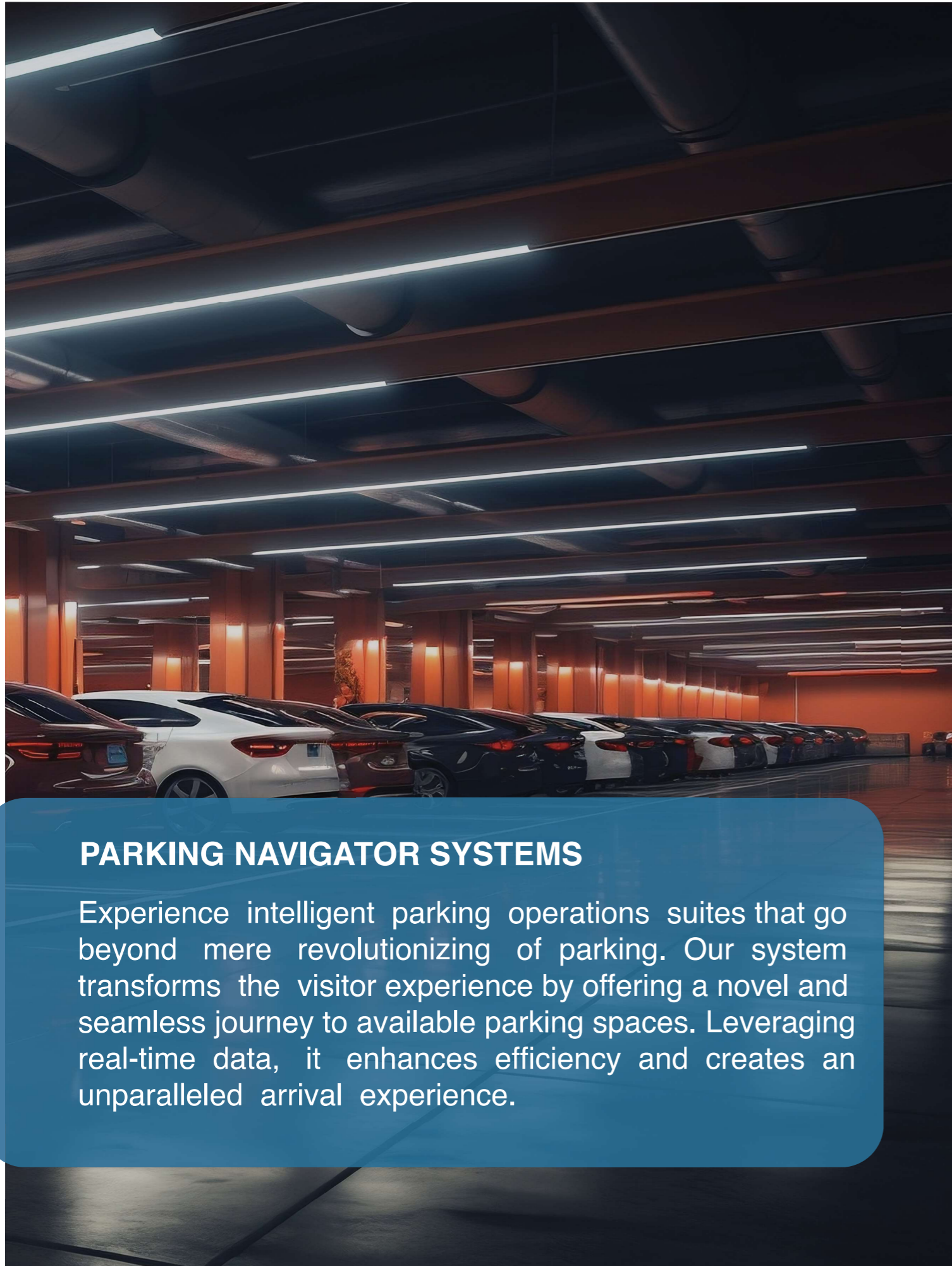
QR Code Access:

Eliminate consumables with our QR code and barcode module, simplifying the management of temporary and permanent access in offices, parking lots, and other infrastructures. Experience the efficiency and convenience of QR codes today.

Versa Gate Access Control Solution:

Embrace versatility with our unified access control reader, combining traditional and modern access methods. Unlock doors effortlessly using RFID, NFC, QR code, or Bluetooth technology, allowing users to authenticate using their mobile phones or RFID cards.





PARKING NAVIGATOR SYSTEMS

Experience intelligent parking operations suites that go beyond mere revolutionizing of parking. Our system transforms the visitor experience by offering a novel and seamless journey to available parking spaces. Leveraging real-time data, it enhances efficiency and creates an unparalleled arrival experience.

MOTORIZED GATES

Half and Full-Height Turn style, Revolving and Sliding Doors



X-RAY MACHINE & METAL DETECTORS



2 AUDIO VISUAL SMART SOLUTION

INTEGRATED MEETING & BOARD ROOM



Our Meeting & Board Room AV Solutions turns challenges into opportunities expedites decision-making and fosters innovation. A contemporary essential in any workspace. Our AV system elevates formal management meetings and unplanned gatherings, igniting more impactful and productive experiences.



PUBLIC ADDRESS & AUDIO SYSTEMS

Unlocking seamless connectivity, video conferencing has empowered professionals from financial advisors to therapists, tutors and lawyers to engage clients one on one. As the pandemic reshaped norms, even legal proceedings fully embraced video conferencing, revolutionizing the way professionals connected and consult.

3 TV AND SATELLITE

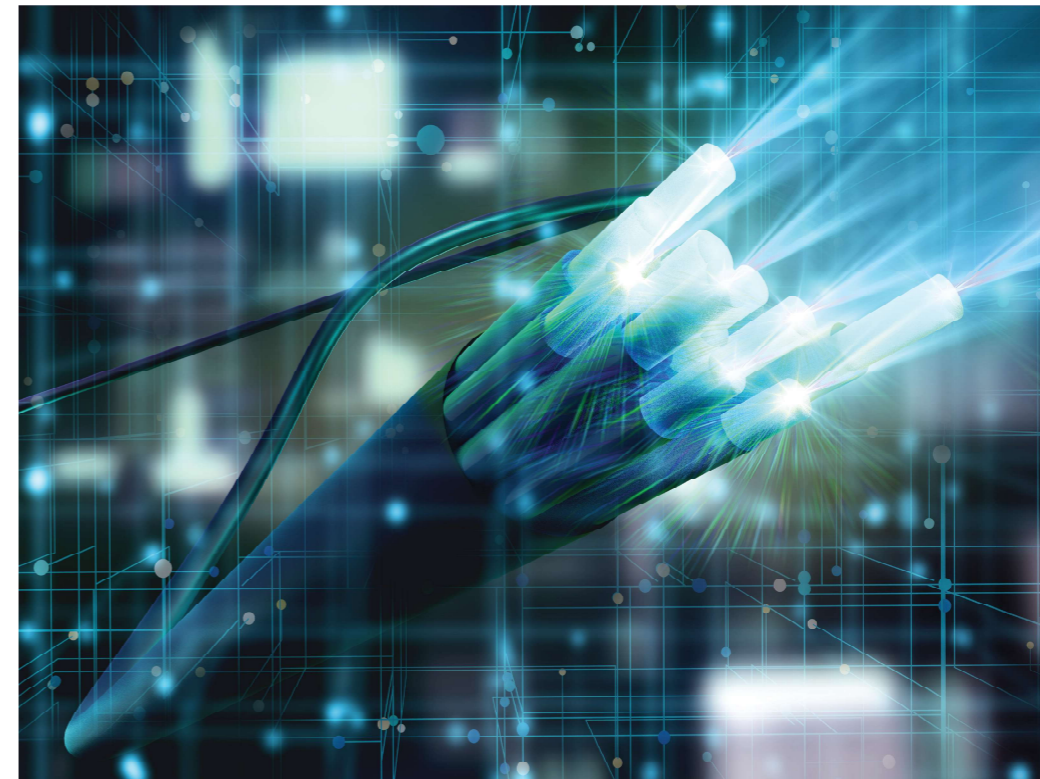
IPTV & DIGITAL SIGNAGE



Embracing the future of television, IPTV revolutionizes content delivery by streaming directly through wired or wireless internet, by passing the need for traditional satellite dishes or cable networks.

Our comprehensive approach offers turn-key end-to-end OTT IPTV Middleware solutions, featuring a modular design that allows tailored selection of building blocks to create or enhance your IPTV solution with custom development options available. Our extensive expertise ensures state-of-the-art solutions that not only meet but exceed the expectations of our customers.

SATELLITE OVER FIBER



Optical fiber offers extensive data transmission capabilities and serves as an optimal medium for video transmission. Utilizing video over fiber innovative technology allows the seamless distribution of video/TV signals across fiber networks, enabling users to access digital and analog TV via internet/phone fiber networks without bandwidth limitations. This technology supports an unlimited number of HD channels at top quality, eliminating the need for satellite dish infrastructure in gated communities, business complexes, or citywide implementations.



DIGITAL SIGNAGE



We take the digital display technology to the next level beyond LCD & LED signage, from outdoor signage, commercial displays and digital display screens and solutions to virtually all business needs.

SATELLITE MASTER ANTENNA

A Satellite Master Antenna Television (SMATV) system uses a single large dish antenna to distribute satellite TV signals to multiple users in building or complex. It's cost effective, space-saving, and allows for centralized management, offering users access to a wide range of channels and programming options.



4 INFRASTRUCTURE AND DATA CENTER

ACTIVE DATA EQUIPMENT & NETWORK INFRASTRUCTURE

AGIS has an extensive range of active networking hardware of ethernet networking equipment our range of switches, routers, wireless access points, media converters (and more) is tailored to business requirements and therefore has to be cost-effective and above all reliable.

- 1- Data switches & routers
- 2- WIFI & wireless link solutions
- 3- Storage & Servers
- 4- VOIP & Collaborative Communication Solutions
- 5- Wireless Link Solution.

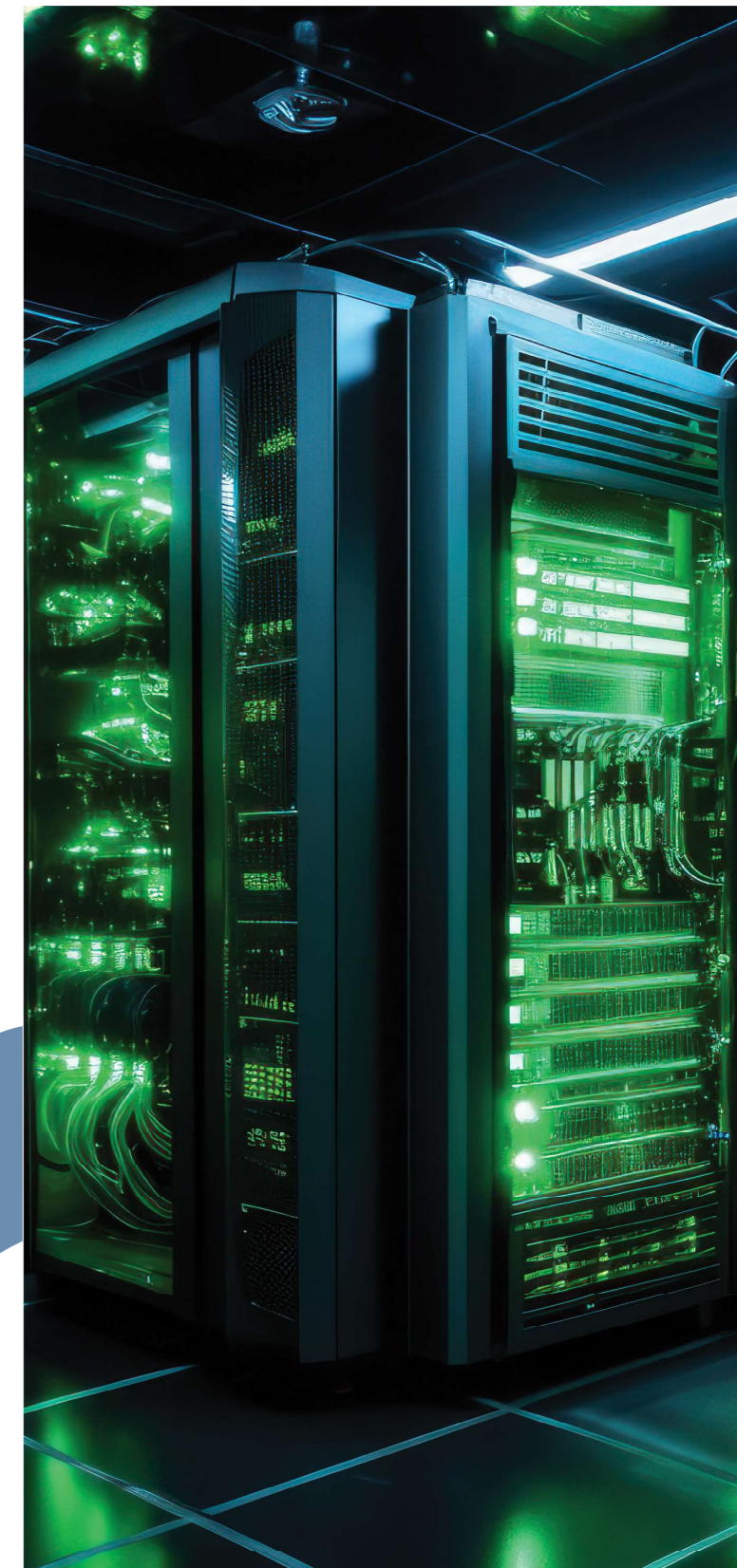


DATA CENTER

Data Centers are fundamental to any organization since they form a reliable space where organizations house their most significant data and depend on those datacenters to keep their data accessible, secure and protected. Data Centers are not a one-size-fit solution for all organizations given that the size and the needs of every business differ. This means that designing and preparing a data center is a vital job that requires a high level of efficiency and professionalism.

AGIS has a team of skillful professionals whose job is to help your organization tailor a customized datacenter solution that suits your needs from absolute security to budget, timeline, and maximum efficiency.

- Centralized Operations Integration
- Data Center Design & Preparation



PASSIVE DATA EQUIPMENT & NETWORK INFRASTRUCTURE

We specialize in high-capacity fiber networks, handling up to 100Gb/s bandwidth across local or wide area networks.

Our services include optical fiber installation for buildings, campuses, and expanding areas.

Our innovative design cuts infrastructure costs by 80% while maximizing bandwidth we also offer racks and enclosures for network protection, with high IP ratings for outdoor use.

Our customizable cabinet designs prioritize security, density, connectivity, administration, power, and air flow. Additionally, we provide Copper structure cabling, including CAT7 and CAT8 systems, accommodating various communication technologies.

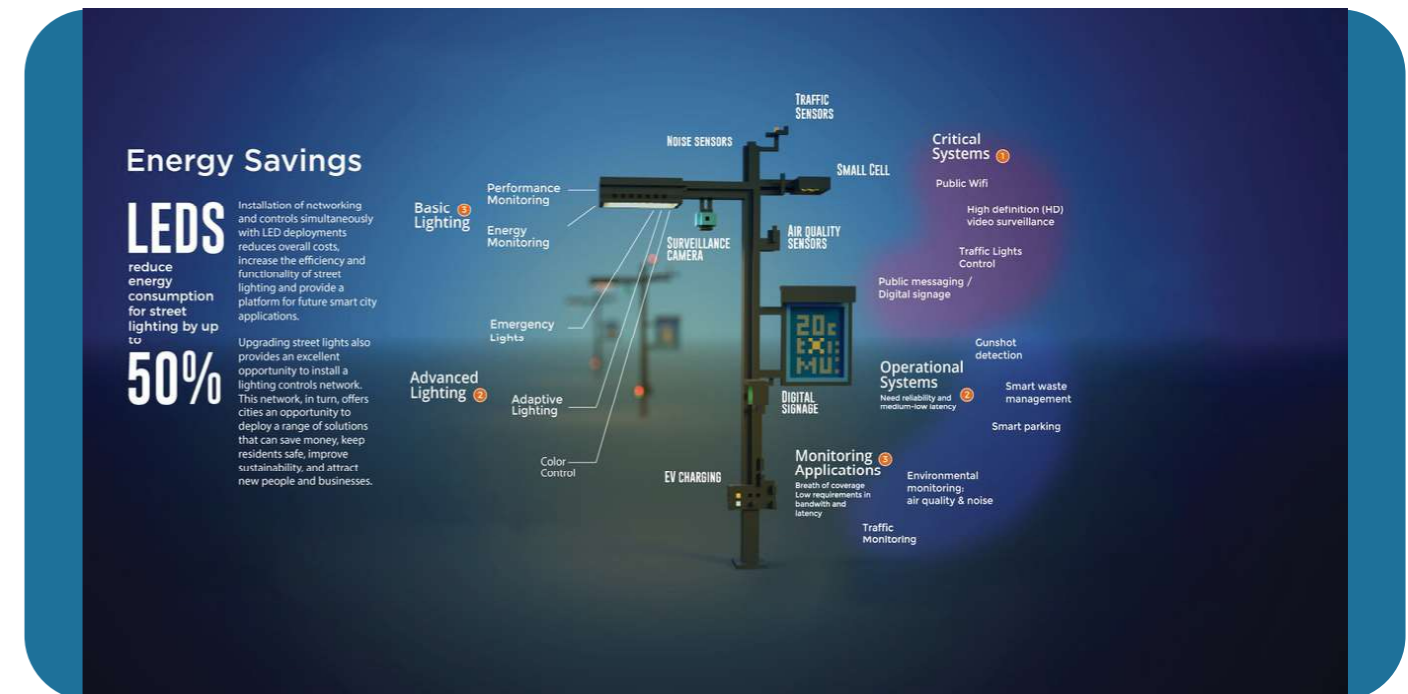
- Advanced Connectivity Infrastructure/ FTTH
- Diverse options of Racks and Enclosures
- Connectivity Cables



SMART LIGHTING AND ENERGY SOLUTION

Smart Lighting

Presenting our groundbreaking solar smart lighting systems that optimize efficiency and sustainability. These lights utilize motion detection to save up to 50% of battery life, powered by kinetic energy from pedestrian and car movements. They eliminate grid reliance for landscape lighting and offer remote control for settings like intensity and sensitivity. Some models even detect adverse weather condition by unparalleled ROI, clean energy reliance, and wireless communication, our lighting solutions set the benchmark for eco-friendly and cost-effective illumination.



SUSTAINABLE ENERGY SOLUTIONS

We adhere to industry best practices, collaborating with top-tier power product manufacturers to offer cutting-edge power-saving solutions for IT components. Our solutions not only enhance the visibility and reliability of your business operations, but also provide a comprehensive architectural approach. Emphasizing delivery, reliability, efficiency, and intelligence, our solutions are designed to address cost reduction across the board.

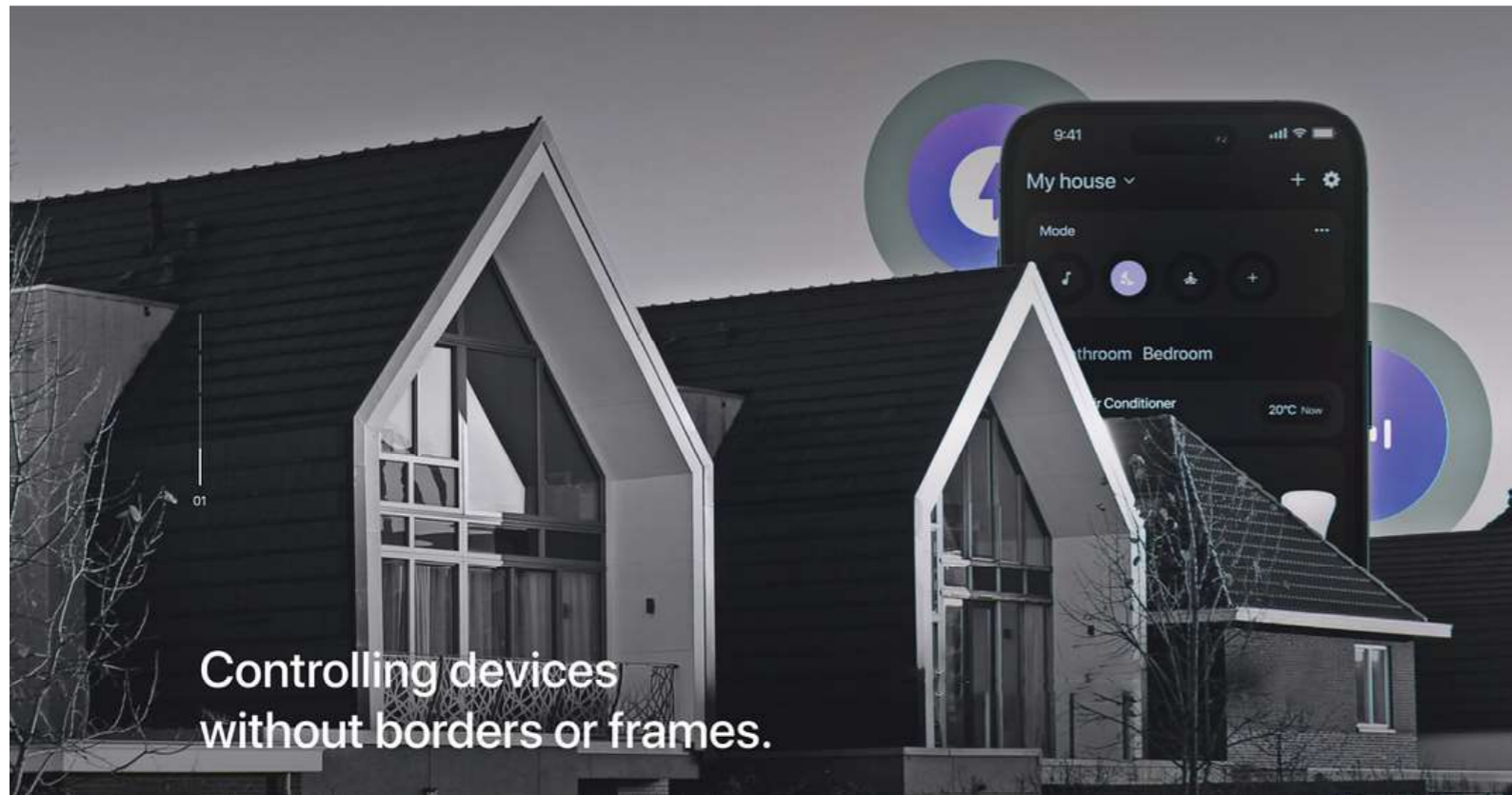


SMART EV CHARGING SYSTEMS

Our Electric Vehicle (EV) smart Charging System is designed to meet the needs of modern drivers, offering efficient, smart and reliable charging solutions. With possible integration with local infrastructure via different protocols, our smart EV charging system is capable of providing end user the ability of monitoring the charging process while sending alerts and notification during the charging period.

6 HOME AUTOMATION

The Tailored solution is designed to get integrated with smart home complete solution with eider range of options to be tailored as per client preference the system is capable of providing and not limited to the following features.



REMOTE ACCESS

Enables users to monitor and control their home's systems and devices from anywhere using a smart phone or tablet.



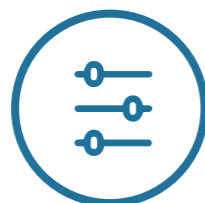
SECURITY SYSTEM INTEGRATION

Integrates security cameras, motion sensors, and smart locks for enhanced home security and surveillance.



VOICE CONTROL

Allows users to control various devices and systems within their home using voice commands through virtual assistants like Alexa or Google Assistant.



ENERGY MANGMENT

Optimizes energy usage by regulating heating, cooling, and lighting systems based on preferences and presence detection.

AUTOMATED LIGHTING

Controls indoor and outdoor lighting, allowing scheduling, dimming, and colour changes for ambiance or security purposes.

ENVIRONMENTAL SENSORS

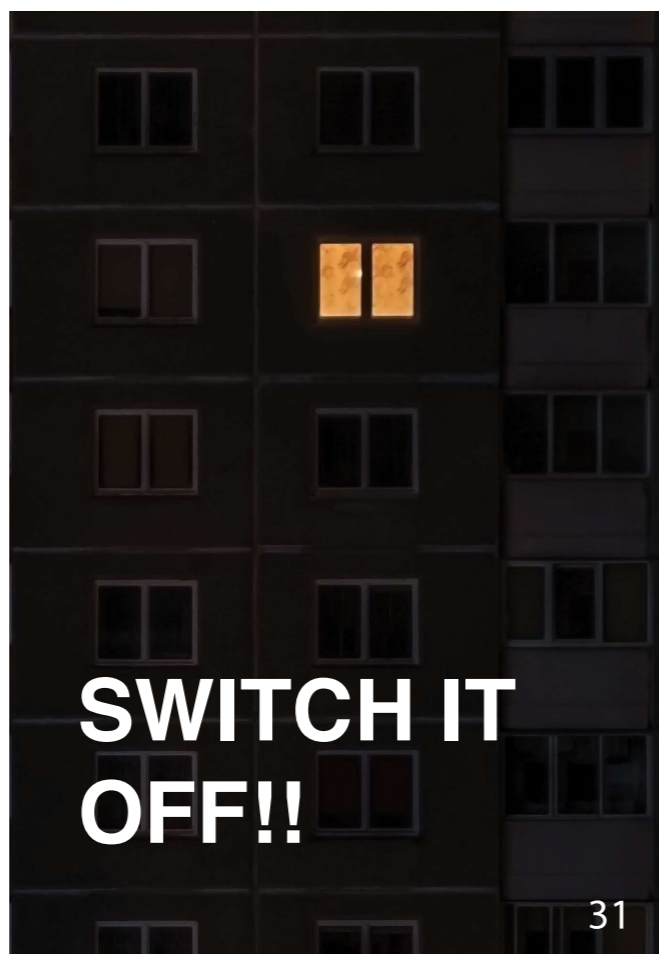
Monitors factors like temperature, water leakage, gas leakage, humidity, and air quality to create a comfortable and healthy indoor environment.

AUTOMATED WINDOW COVERINGS

Controls curtains or blinds based on time, sunlight, or user preference.

SMART APPLIANCES

Includes appliances like refrigerators, washing machines, and thermostats that can be remotely controlled and programmed.



ENTERTAINMENT SYSTEM INTEGRATION

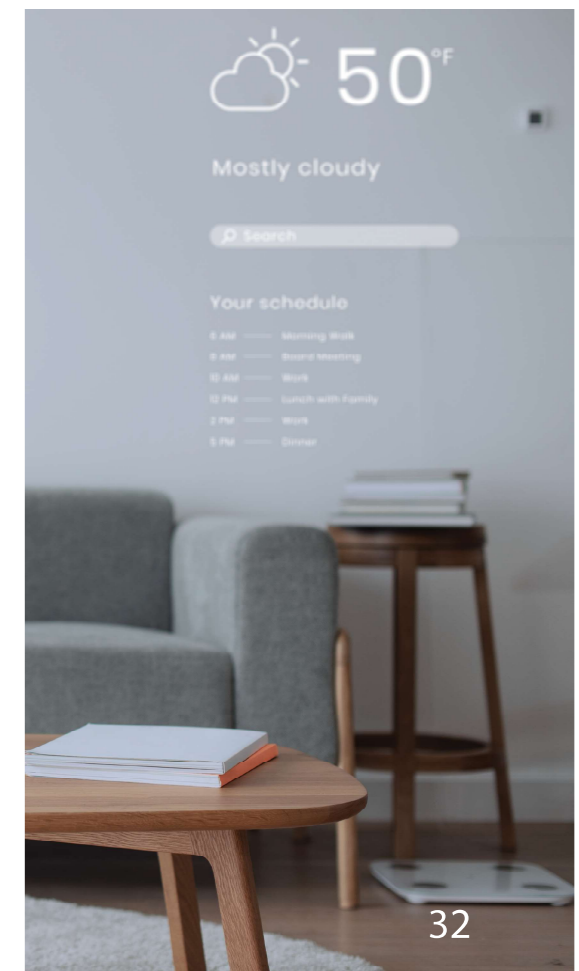
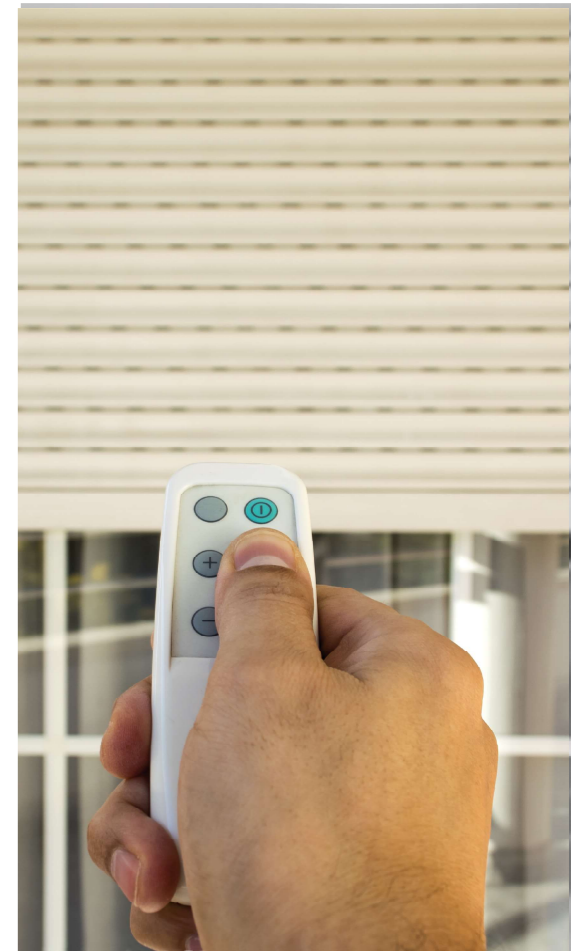
Integrates home theaters, music systems, and streaming services for entertainment experiences.

REMOTE VALVE ACCESS

Enables home owners to remotely control the main water valve or gas supply, allowing them to turn it on or off using a smart phone app or voice command.

SAFETY ALERTS

Provides real-time alerts to users in case of detected gas leaks, unusual water usage or irregularities in gas usage, ensuring immediate action taking.



7

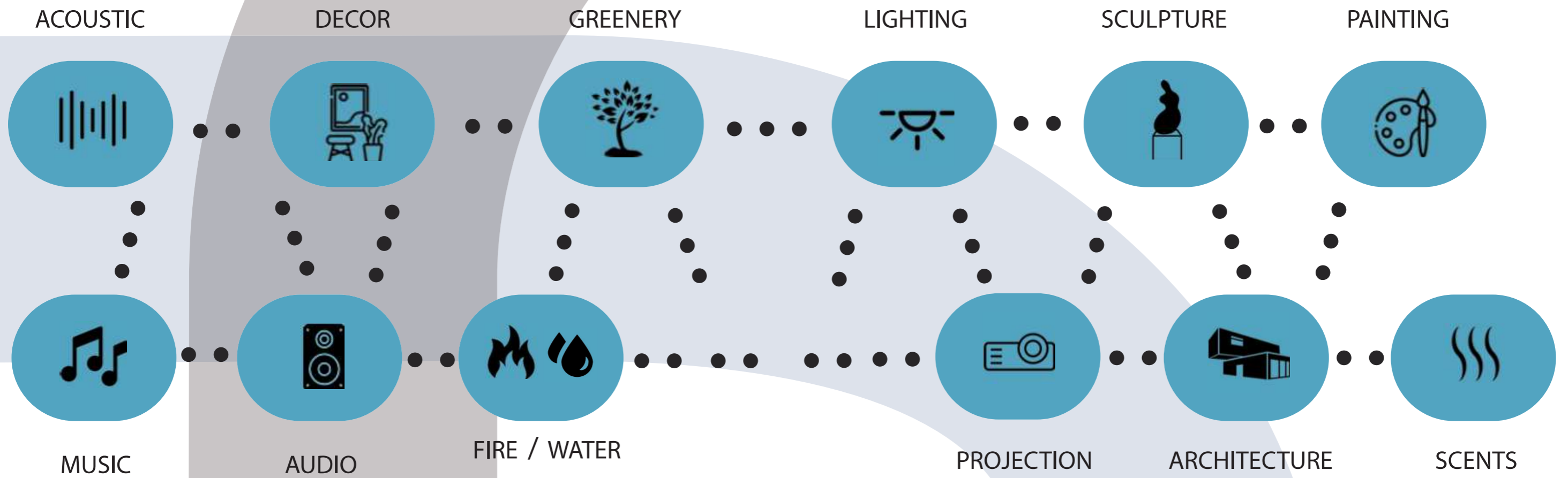
THE MITA CONCEPT

The artistry and design of MITA's all-immersive spaces fully envelop the senses, creating new and exciting experiences for guests and visitors. MITA strives to perfect every detail of open spaces ranging from acoustics and lighting, creative fixtures, to even the scent in the air and the feel of the textures that elevates visitors to an unforgettable experience.

Our world class team is supported by a global network of credentialed specialists made up of respected authorities in consulting, sound engineering, light design, landscape design, pyrotechnic & laser design, and much more. With a passion for the industry, MITA guarantees a one-of-a-kind artistic solution from design, build, and production that creates a unique work of art for its clients.



THE ELEMENTS OF MITA



DIFFERENT APPLICATIONS

MITA's scientific method in analyzing and enhancing the relationship between visitors and spaces makes it a pioneer in the field.

MITA's cutting-edge methodology could be applied to a wide spectrum of industries and market sectors. These include, but are not limited to, hospitality, education, entertainment public areas, private spaces, landmarks, transportation and more. Some examples include hospitals, restaurants, malls, amusement parks, residential compounds, workspaces, hotels, beaches, commercial strips, towers, airports, metro stations, parks, zoos, touristic areas and much more.



WHOM WE SERVE



SECURITY



HEALTH CARE



HOSPITALITY



BANKING



OIL & GAS



ENTERTAINMENT



REAL ESTATE



TRANSPORTATION



EDUCATION

OUR CLIENTS



OUR PARTNERS





Alfa Group
Integrated Systems

Contact Us

USA



27440 sky lake cir,
wesley-chapel, florida, 33544



+1-813-817-7737
+1-813-803-8450

EGYPT



4 New Marwa Towers, 10th floor,
Ahmed Tayseer St. Heliopolis
Cairo



+202-2519-3148
+20-1559786066

www.alfagroup-is.com



Info@Alfagroup-is.com
sales@alfagroup-is.com

THANK YOU

YOU HAVE UNLOCKED A SMART WORLD